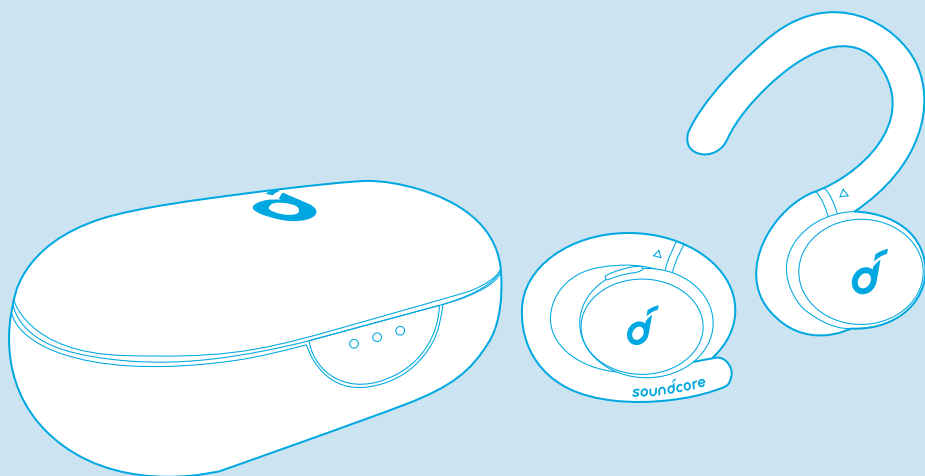


soundcore



Soundcore Sport X10

**USER MANUAL**

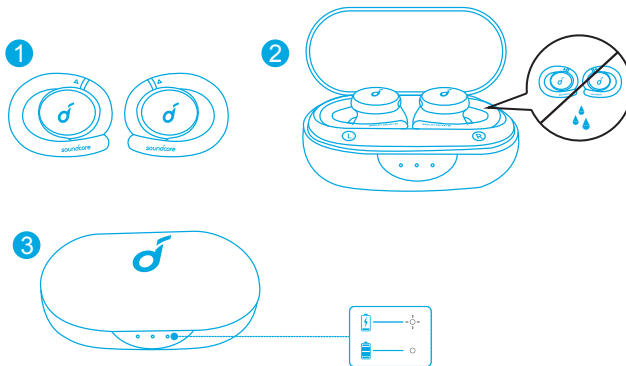
## Charging



- Fully dry off the earbuds and the USB port before charging.
- Use a certified USB-C charging cable and charger to prevent any damage.
- Fully charge both the earbuds and the charging case before the first use.

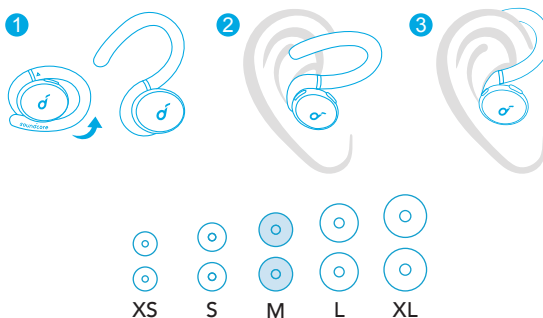
1. Place the earbuds in the charging case and close it.
2. Connect the charging case to the power supply by using a USB-C charging cable.

→ The LED indicator on the charging case indicates the charging status.



## Wearing

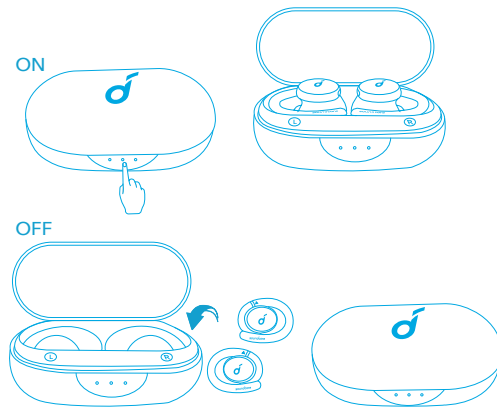
1. Choose the Ear Tips that fit your ears best.
2. Insert the earbuds into the inner canal of your ears and turn gently until you find the most comfortable and secure position.



- Your earbuds come with 5 pairs of Ear Tips, among which Medium-sized are pre-installed.

## Powering On/Off

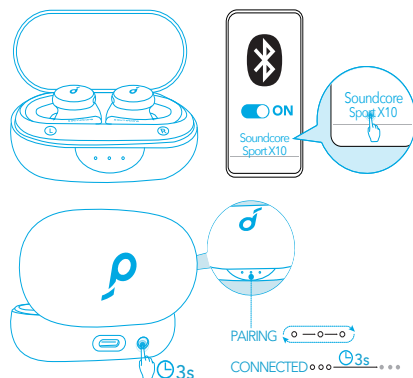
- Open the charging case, the earbuds will automatically power on.
- To power off, place the earbuds into the charging case and close it.



- The earbuds will automatically power off after 10 minutes if no device is connected.
- To manually power on, press and hold the multi-function button on both earbuds for 3 seconds.

## Bluetooth Pairing

1. Open the charging case, and press the button on the charging case for 3 seconds to enter Bluetooth pairing mode.
  - The 3 LED indicators on the charging case will flash white in sequence continuously.
2. Select "Soundcore Sport X10" on your device's Bluetooth list to connect.
  - When successfully connected, the 3 LED indicators will turn white for 3 seconds and then turn off.



- **Pairing with another device:** Place the earbuds in the charging case and leave the case open. To enter pairing mode, press and hold the button on the case for 3 seconds until the 3 LED indicators flash white in sequence continuously.
- Each time you power on your Soundcore earbuds, they will automatically connect to your last successfully connected device if available within the Bluetooth range.
- **Mono mode:** When Bluetooth connected, you can use either one of the earbuds only by placing the other one into the charging case.
- When powered on and connected, if either one of the earbuds is out of battery and powered off, you can keep using the other one.
- When you are on a call, place either one of the earbuds into the charging case, and the microphone in the other earbud will be activated.

## Controls

### Stereo Mode

🎵	
Play/Pause	Press twice (R)
Next track	Press twice (L)
Volume up	Press once (R)
Volume down	Press once (L)
ANC	Press and hold for 2 seconds(R/L)

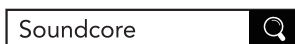
📞	
Answer a call	Press once(R/L)
End a call/Reject a call	Press and hold for 2 seconds(R/L)

## Mono Mode

Play/Pause	Press twice
Answer a call	Press once
End a call/Reject a call	
Activate Siri or other voice assistant software	Press and hold for 2 seconds

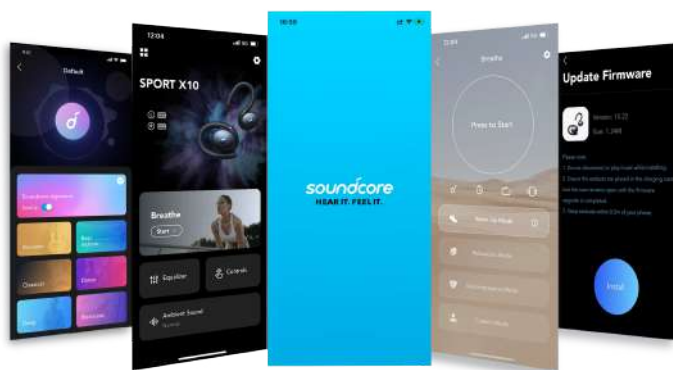
## Soundcore App

Download the Soundcore App to customize the user interface (e.g. adjust volume, control playback, activate Siri), adjust EQ, switch ANC modes, update firmware, and explore more.



Google Play and the Google Play logo are trademarks of Google Inc.

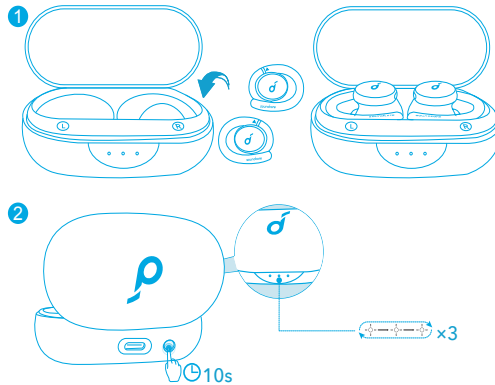
Apple and the Apple logo are trademarks of Apple Inc.



## Reset

- You might need to reset the earbuds if you experience any connectivity problems or function issues.

1. Place the earbuds in the charging case and leave the case open.
2. Press and hold the button on the charging case for 10 seconds until the LED indicators on the case flash white 3 times and then flash in sequence. This confirms that the reset was successful and your earbuds can be connected normally.



## Specifications

 Specifications are subject to change without notice.

Input	5 V $\overline{\text{---}}$ 0.5 A
Rated output power	5 mW (@1% THD)
Battery capacity	55 mAh x 2 (earbuds); 540 mAh (charging case)
Charging time	2 hours
Playtime (varies by volume level and content)	Up to 8 hours (Total 32 hours with the charging case)
Driver size	10 mm x 2
Frequency response	20 Hz - 20 kHz
Impedance	32 $\Omega$
Waterproof level	IPX7(earbuds)
Bluetooth version	5.2
Bluetooth range	10 m / 33 ft