

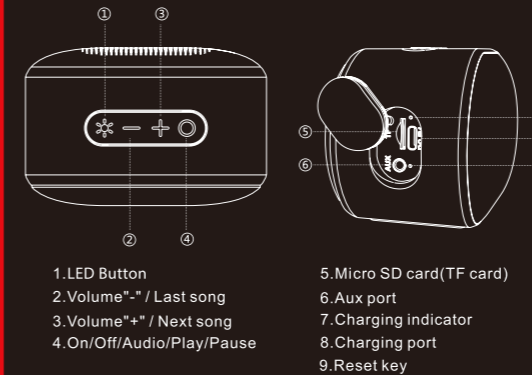


STONE 250

Thank you for purchasing Stone 250. You are now just a step away from the realm of Nirvana. Please follow this user manual carefully in case of any doubts and difficulties that arise. Please note that play time varies depending on the selected volume level. You can stay plugged into the sound with Bluetooth wireless technology, TF Card & aux wire compatibility. This portable speaker has been designed for smooth interface that requires the minimal of efforts.

Package Contents:

- Bluetooth Speaker
- Type C Charging Cable
- Audio Cable
- User Manual
- Warranty Card
- Catalogue



1. LED Button
2. Volume "-" / Last song
3. Volume "+" / Next song
4. On/Off/Audio/Play/Pause

5. Micro SD card (TF card)
6. Aux port
7. Charging indicator
8. Charging port
9. Reset key

Charging norms & Precautionary Guidelines:	1) Charger/Brick/Adapter : 5V 2A
Any other accessory can be paired up with the product as long as the specifications are as per above norms.	2) Cable/Wire : Standard Cable (35 strands @0.10mm diameter/strand)

Power On/Off:

You may long press the MFB (Multifunction button) to switch the speaker ON/OFF.

Functions:

- **Answer Incoming Calls:** Short press the MFB once
- **End Calls:** Short press the MFB once to end calls
- **Reject Incoming Calls:** Long press the MFB for 2 seconds
- **Switch Modes:** Double tap the MFB to select modes (Bluetooth/AUX/TF Card)
- **Volume Increase:** Short press the "+" button in steps for increasing the volume
- **Volume Decrease:** Short press the "-" button in steps for decreasing the volume
- **Play/Pause:** Short press the MFB to play or pause the tracks
- **Previous Track:** Long press the "-" button for returning to the previous track
- **Next Track:** Long press the "+" button for skipping to the next track
- **Voice Assistant:** Triple tap the MFB to wake up your smart voice assistant
- **Disconnect Bluetooth:** Single press the "-" and "+" buttons together to disconnect Bluetooth device, indicated by colourful LED
- **LED Mode:** Double tap the LED button to turn the light on or off
Light Effect Switch: Single tap the LED button
- **Reset Key:** If in case you face any difficulty with your product, simply insert an insulated pointed object (eg- toothpick) inside the reset key to restart & reboot your device

Bluetooth Connectivity:

• Turn the speaker on. Its LED indicator flashes in colourful LEDs until the pairing is done

• Activate the phone's Bluetooth function and search for "Stone 250". As soon as the speaker gets selected and paired by you, the connection gets indicated by a sound prompt

Note:
The speaker can automatically reconnect to the last paired device. If you are having connection troubles, then remove Stone 250 from the list of paired devices on your phone, keep the phone closer to the speaker and try pairing again

AUX Mode:

• You can switch to AUX mode by using the AUX cable to connect the phone and the speaker, and then double tapping the MFB

• In the AUX mode, you can control the audio playback via the media device/ phone

TF Card Mode:

• You can switch to TF Card mode by inserting the TF card into the provided slot and then double tapping the MFB

Charging:

• Stone 250 beeps once every 30 seconds when the battery is low. After three such indications, the speaker automatically turns off

• Utilize the provided charging cable to charge the speaker

• The LED indicator turns into steady red while charging; the same goes off as soon as the speaker gets fully charged

Note: Please avoid using the speaker while it is in charge as it may decrease the battery's performance

Specifications:

Speaker Type	Portable Wireless Mono Speaker
Bluetooth Version	V5.0
Working Range	10m
Speaker Size	1.75"
Water Resistance	IPX7
Compatibility	Bluetooth V5.0 / AUX / TF Card
SNR	80dB
Frequency	70Hz-20kHz
Input Voltage	5V/2A
Output Power	5W
Play Time	Up to 8H w/ LED; 5H w/ LED
Talk Time	Up to 8H
Charging Time	1.5-2 hours
Battery	800mAh
TF Compatibility	Yes
AUX Compatibility	Yes
Weight	145g

Warning:

- Please charge the speaker according to the charging norms mentioned on packaging to protect the battery
- Do not disassemble the product
- Do not submerge the product inside water
- Please keep this product safe from coming in contact with any liquid
- Don't use/store this product in extreme temperatures
- Please keep the product away from anything that generates heat, such as radiators, stoves, etc.
- In order to have hearing protection and an extended speaker life, avoid listening to songs on maximum volume
- Don't try to dismantle/repair the product on your own.