

Get. Set.
Play.

Airdopes 131
Twin Wireless Ear-buds

Get ready to get yourself soaked in musical bliss with your very own pair of boAt Airdopes 131. Please consider this manual as your guiding map towards the shores of musical bliss. Knowledge of Bluetooth and device connectivity is essential for steering this boat and therefore we strongly recommend thorough reading of this manual; you may also refer to the same at times when you face any sort of difficulty in future.

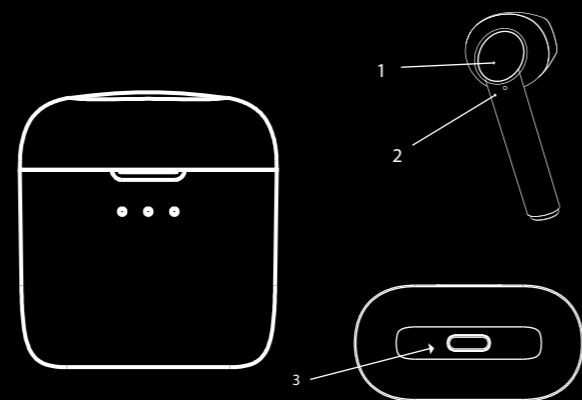


In the box

- 1 1x pair of Ear-Buds
- 2 1x Charging Case
- 3 2x Pairs of Additional Earmuffs
- 4 1x User Manual
- 5 1x Charging Cable

Product Overview

- 1 MFB (Multi Function Button) / Power Button
- 2 Indicator Lights
- 3 Charging Port



Power On (First Time User)

Step 1: To automatically switch the earbuds on (Smart Power On) simply open the lid of the charging case. When you open the lid of the case, our IWP™ (Insta Wake N' Pair) Technology enables the earbuds to power on automatically, get connected and enter into the connection mode

OR

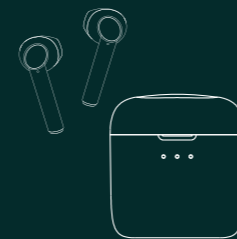
To manually switch the earbuds on (Manual Power On), long press the Multifunction Button (MFB) on both earbuds for 3 seconds until the LED starts to flash in blue

Step 2: Both the earbuds will automatically pair with each other. The earbuds will enter into the Connection Mode

Step 3: Turn on the Bluetooth functionality on your phone/media device and scan

Step 4: Search for 'Airdopes 131' and pair accordingly. Enter '0000' as the passkey if asked.

Congratulations! Your earbuds are now connected successfully via Bluetooth



Power On (Subsequent Usage)

IWP Technology: The next time you open the lid of the case, our IWP™ (Insta Wake N' Pair) Technology enables the earbuds to power on automatically, and get connected to the previously connected device.

Notes:

• Pairing mode lasts for 5 minutes. If the pairing time is missed then you will need to reconnect the ear-buds and follow the above mentioned procedure

• Airdopes 131 remembers previously connected devices; once switched on, the ear-buds automatically reconnect to the previously connected device

Single Earbud Usage

Step 1: Please note that both the earbuds can be used in mono mode. Use either of the two options; Smart Power On or Manual Power On for switching on the desired earbud

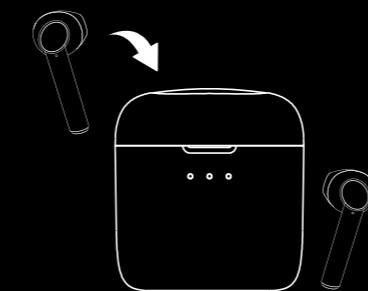
Step 2: The selected earbud will automatically enter the connection mode.

Step 3: Turn on Bluetooth on your phone/media device and search for 'Airdopes 131' to connect

Notes:

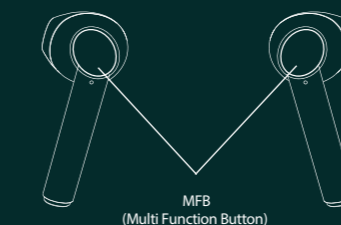
• To switch to Stereo mode, simply take out the other earbud from the case. It will automatically power on and pair with the previously selected earbud, hence enabling Stereo usage.

• You cannot skip tracks or return to the previous tracks in Mono mode.



LED Indicators / Functionalities

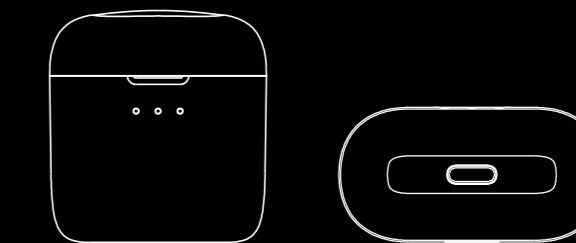
- 2 Seconds: Long press the MFB on either earbud for 2 seconds to activate Voice Assistant
- 3 Seconds: Long press the MFB on both earbuds for 3 seconds to manually Power On (Blue LED)
- 5 Seconds: Long press the MFB on either earbud for 5 seconds in order to manually switch off the earbuds (Red LED)
- Triple Tap: Triple tap the MFB on both earbuds to perform the reset (Red LED)



Charging The Case

Step 1: To charge the case, plug one end of the charging cable into the case and the other end into a USB port/adaptor

Step 2: Flashing white LEDs indicate that the charging case is being charged. Once the charging case gets fully charged, the LEDs turn into solid white



Note - The LED lights located on the charging case indicate the battery status of the case.

Charging The Earbuds

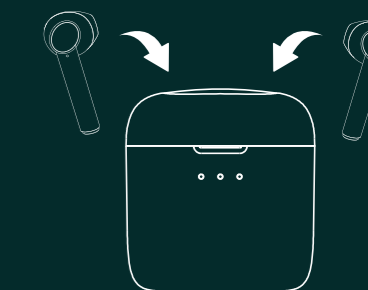
Step 1: Please insert the earbuds back inside the charging case in correct orientation.

Step 2: A solid white LED will indicate that the earbuds are being charged. Once fully charged the LED turns off

Step 3: Once the earbuds are fully charged, the charging case automatically switches off to save power.

Note:

• Before using the ear-buds for the first time, it is recommended to fully charge the ear-buds. Also, please keep the lid of the charging case closed while charging and use a 5V/2A adaptor



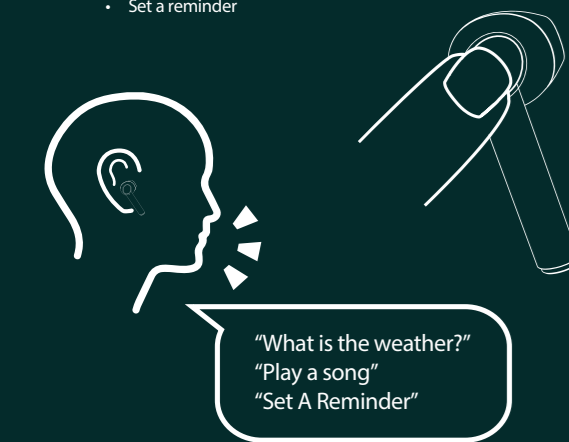
Voice Assistant

Step 1: Long press the MFB on either earbud for 2 seconds to activate the voice assistant

Step 2: The respective voice assistant screen pops up and you may place your commands at ease

Tips: You may try the following commands,

- What is the weather?
- Play a song
- Set a reminder



Smart Power Off

Step 1: After usage, remove both the earbuds from your ears

Step 2: Place the earbuds back inside the charging case in correct orientation and close the case lid

Step 3: The earbuds will automatically switch off (and enter into charging mode.)

Manual Power Off

Step 1: Long press the MFB on either earbud for 5 seconds in order to manually switch off the earbuds. Please note that this powers off both the earbuds

Step 2: Please keep the earbuds back into the charging case to charge the earbuds

Basic Functions

• Voice Assistant: Long press the MFB on either earbud for 2 seconds to activate the voice assistant

• Answer/Hang Up Call: Single press the MFB on either earbud to answer an incoming call and once again to hang up an ongoing call

• Reject Call: Long press the MFB for 2 seconds to reject incoming calls.

• Play/Pause Music: Single press the MFB on either earbud to play a song or to pause one

• Next Track: When playing music, double press the right earbud's MFB in order to skip to the next song on the playlist

• Previous Track: When playing music, double press the left earbud's MFB in order to return to the previous song on the playlist

Note: Volume cannot be controlled via earbuds and can only be adjusted via phone/media device

Factory Reset

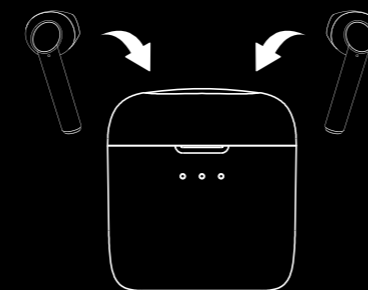
Perform the Factory Reset in case you face any difficulty while operating your Airdopes 131

Step 1: Keep both the earbuds inside the case in their correct orientation

Step 2: Triple tap the MFB on both earbuds to perform the reset. Red LED blinks for 1 sec to indicate the same

Step 3: After the reset, close the lid of the carry case

Step 4: Congratulations! Your Airdopes 131 has been reset and ready to establish connection again.



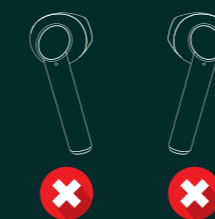
Common Problems with Solutions

If only one earbud is functioning:



Simply insert the earbuds back into the case and take them out or perform the Factory Reset

If earbuds are not in scan mode:



Simply insert the earbuds back into the case and take them out or perform the Factory Reset

Specifications

Bluetooth Version	V5.0
Driver Size	13mm
SNR	90dB
Music Playtime	Up to 3 Hours (Up to 12H with Case)
Talk Time	Up to 3 Hours
Standby Time	100 Hours
Transmission Range	10m
THD	<5%
Bluetooth Profile	HSP, HFP, A2DP, AVRCP
Frequency	20Hz-20000Hz
Battery Earbuds	40mAh x2
Battery Charging Case	650mAh
Charging Time	2 Hours

Troubleshooting

Potential Problem	Solution
If one earbud is not working	Perform the Factory Reset
If earbuds are not in connection/scan mode	Perform the Factory Reset
If earbuds disconnect during phone call	Charge the earbuds or perform the Factory Reset
If there are other exceptions in usage	Place the earbuds back into the charging case and try using them again or perform the Factory Reset

Warning

- Please follow the instructions to operate
- Please charge the ear-buds with input power below 5V/2A in order to protect the battery
- Please don't use the ear-buds in extreme temperatures
- Please don't use the product near water
- Please keep the product away from heat sources, as the heat may damage it
- Don't jam the ports such as charger port, LED port, etc.
- It is recommended to utilize the product below the maximum volume in order to protect hearing and extend the ear-buds' service life.
- Never disassemble or modify the device to avoid any permanent damage or danger
- Do not use the device during a thunderstorm to avoid irregular function or risk of electric shock
- Don't use harsh chemicals to clean the device

Advisable: The earbuds start at a 100% volume and it may need to be reduced when the earbuds are switched on at first. This can be done by using the volume control on the phone/ media device.

Charging norms & Precautionary Guidelines:	
1) Charger/Brick/Adapter	: 5V/2A
1) Cable/Wire	: Standard Cable (35 Strands @0.10mm diameter/strand)
Any other accessory can be paired up with the product as long as the specifications are as per above norms.	

Get. Set.
Play.

