

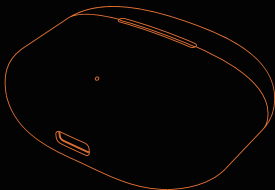
User Guide

‡ MadRabbit Soul Buds Alpha

Specification

Model :	MadRabbit Soul Buds Alpha
Bluetooth Version :	V5.1
Bluetooth Range :	15 m
Driver Size :	13 mm
Driver Impedance :	32Ω
Frequency :	20Hz - 20kHz
Audio Codec :	SBC, AAC, APE, FLAC
Music Time :	6.5 h
Calling Time :	4 - 5 h
Standby Time :	4 months (Max)
Charging Time :	1.5 h
Earbuds Battery :	40 mAh
Charging Case Battery :	320 mAh
Charging Interface:	Type-C

What's in the Box?



Charging Case



Wireless Earbuds



Type-C Charging Cable

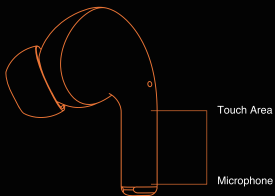
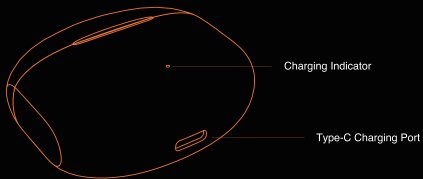


User Manual

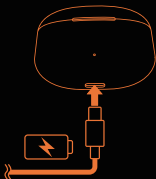


Eartips

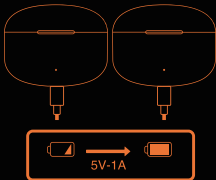
Product Details



Product Usage



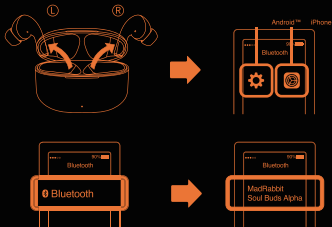
- Use the original charging cable to charge. Fast charging is prohibited.
- Charge the charging case before using earbuds for first time.



- Charging case indicator light will flash in White while charging. Once fully charged, White light will stop flashing and remain on.
- Charging case indicator will remain on in White when the earbuds in charging mode. Once fully charged, the White light will disappear.

Bluetooth Pairing

Take out earphones and search 'MadRabbit Soul Buds Alpha' on your mobile to connect.



How to Wear?

Take the earbuds out from the charging case and put them in your ears and wiggle them slightly for the best fit and comfort



Left Earbud Function



Short Touch

- 1 Tap - Volume Down
- 2 Taps - Play / Pause
- 3 Taps - Last Song



Long Touch

- Long Touch (3s) - Voice Assistance
- Long Touch (2s) - Reject Call

Right Earbud Function



Short Touch

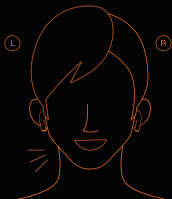
- 1 Tap - Volume Up
- 2 Taps - Play / Pause
- 3 Taps - Next Song



Long Touch

- Long Touch (3s) -Voice Assistance
- Long Touch (2s) -Reject Call

Call Function



Short Touch

 2 Taps - Receive / Hang Up Call



Earbuds Charging

Put the earbuds into the charging case to charge when it indicates low power.



Common problems with Solutions

If only one earbud is functioning:

Simply insert the earbuds back into the case and take them out or perform the Reset

If earbuds are not in pairing

Simply insert the earbuds back into the case and take them out or perform the Reset

Reset

In the mobile, remove the 'MadRabbit Soul Buds' in the bluetooth menu



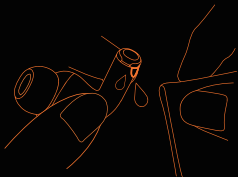
Take out the two earbuds and place them on the table at the same time. Wait for 15 secs to pair automatically.



Usage Tips

Please read this manual carefully before using.

- Charging the earbuds while they are wet with sweat, etc., may corrode the charging terminals. Please wipe off moisture with a dry soft cloth, and let it dry naturally before recharging.



- Don't leave the earbuds in the pocket of your dresses while washing clothes.



Safety Information

Before using and operating the Earbuds, please read and follow the below precautions to ensure the best performance of it and to avoid dangerous or illegal situations.

Electronic Devices

- Do not use this device in the place where wireless devices are prohibited, otherwise it will interfere with other electronic devices or cause other dangers.

Medical Equipment Interference

- In medical and health care places where the usage of wireless devices is prohibited, please follow the rules and turn off the device.
- The radio waves generated by the device may affect the normal operation of implanted or personal medical devices, such as pacemakers, cochlear implants, speaker aids, etc. If you use these medical devices, please consult the manufacturer for restrictions on the use of this device.
- When using this device, kindly keep a distance of at least 15 cm from the implanted medical devices (such as pacemakers, cochlear implants, etc.)

Hearing Loss

- Listening to sound at high volume may permanently damage your hearing. When you use earbuds to listen to music or calls, it is recommended to use the minimum volume required to avoid hurting your hearing.
- Exposure to high-level volume while driving may distract the driver and cause accidents.

Operating Environment

- Do not use the device in dusty, sharp, compact areas or near magnetic fields, etc., to avoid failure of the internal circuit of the device.
- When installing the device, please keep away from strong magnetic fields or electrical appliances with strong magnetic fields, such as ovens and refrigerators.
- Do not use the device in thunderstorm weather. Thunderstorm weather may cause equipment failure or electric shock hazard.
- Please use the device within a temperature range of $-10^{\circ}\text{C} \sim +55^{\circ}\text{C}$, and store the device and its accessories within a temperature range of $-40^{\circ}\text{C} \sim +70^{\circ}\text{C}$. When the ambient temperature is too high or too low, it may cause device function failure. When the temperature is below 5°C , the performance of the battery is limited.



Safety Information

- Do not place the device in direct sunlight, such as the dashboard or window sill of a car.
- Do not place the device near heating sources or exposed fire sources, such as electric heaters, ovens, water heaters, stoves, candles, or other places that generate high temperatures.
- Do not place sharp metal objects such as pins near the device's earpiece or speaker, as the metal objects may adhere and cause injury to you.

Child Health

- This device and its accessories may contain some small parts. Keep the device and its accessories in a place out of children's reach. Children may inadvertently damage the device and its accessories, or swallow small parts, causing suffocation or other hazards.
- This device is not a toy, children should use this device under adult supervision.

Battery Safety

- Do not disassemble or modify the battery, or immerse in water or other liquids, to avoid battery leakage, fire or explosion.
- Do not drop, crush or puncture the battery. It can cause internal short circuits and overheating.
- This device is equipped with a non-removable built-in battery. Do not replace the battery yourself to avoid damage to the battery or device.
- Please dispose batteries in accordance with local regulations. Do not dispose batteries as household waste. Improper disposal of the battery may cause the battery to explode.

Charge Safety

- When charging the device, the power socket should be installed near the device and should be easily accessible.
- When charging is completed or when charger not in use, disconnect the charger from the device and unplug the charger from the power outlet.

Environmental Protection

- Do not dispose this device and its accessories as ordinary household garbage.
- Kindly abide by the local laws and regulations on the handling of this device and its accessories, and support recycling operations.



Precautions

- The earbuds should be stored in a dry / ventilated environment and avoid contacting it with oil, water vapor, steam, moisture and dust to prevent the performance of the product.
- Avoid using harsh organic solvents or items containing these ingredients to clean the earbuds.
- The earbuds should be used correctly according to the requirements. Pay attention to the effect of the environment on the product. Maintain a distance of 2 meters between them for a smooth connection.
- If the earbuds fail to connect or in case of poor connection, please do not dismantle them or the accessories privately. Otherwise no warranty.
- When charging the earbuds, please use the standard car charger or the charger specified by our company.

Trademarks

MadRabbit word mark and logo are registered trademarks of Redster Commerce Pvt. Ltd. Reproduction in whole or in part without written permission is strictly prohibited. Other companies and products mentioned herein are trademarks of their respective owners.

Made in China.

MadRabbit Warranty

- The device is guaranteed for 12 months from the date of purchase. Repair and maintenance service are free during this period.
- The warranty limitation:
 - Man-made damage.
 - Beyond the warranty period.
 - Accessories damage due to improper use and maintenance.
 - Disassembling the device without the authority of the manufacturer.
- Service Information
 - MadRabbit Website : <https://www.madrabbit.in>





Scan To Register A Warranty.



Scan For A Video Guide.