

**BLAUPUNKT**  
TRULY WIRELESS EARBUDS  
BTW300 XTREME



**Enjoy it.**

Please read the instructions before use

Congratulations and Willkommen! You are now part of the Blaupunkt family. You have chosen German iconic brands premium earbuds and have become a part of an elite group that enjoys and appreciates the finest audio experience.

To get the best performance from your Blaupunkt audio product please read this manual carefully and follow the instructions. This will ensure you get the most out of your Blaupunkt product. Keep the manual safely and refer to it when in doubt.

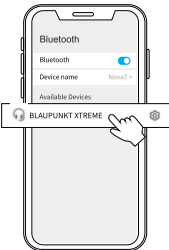
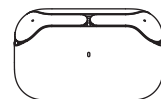
**JUST ONE SCAN CAN!**



One QR Code to access everything - Warranty, Blue Points, Manuals, Service and all you will ever need.

1

**Connect**



1. Take out the earbuds (Earbuds auto power on)
2. After open the phone Bluetooth, Click the <BLAUPUNKT XTREME> to Pairing

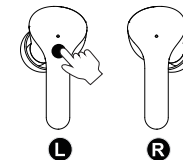
**Reset**

**If earbuds has any connection or function problems, please reset the earbuds**

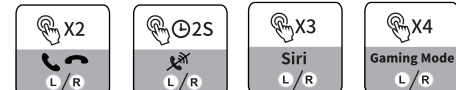
1. Delete the BT pairing information on the phone.
  2. Take the earbuds into the charging case to charge.
  3. Take out the earbuds and wait for 20 seconds.
- (If the above operation does not work, please try again)**

2

**Operation**



Play /Pause    Switch Song    Adjust Volume    Power on/off (When no connected)



Answer/Hang up    Reject Call    Voice Assistant    Gaming Mode

**X1:** Click Once    **Q2S:** Press and hold for 2 seconds  
**X2:** Click 2 times    **X4:** Click 4 times

3

**Problem handling**

**① Can be connected but there is no sound:**  
Click the right earbuds to increase the volume.

**② One of earbuds cannot be charge:**  
Clean the charging contact of the earbuds and the charging case.

**③ One of the earbuds cannot be connected:**  
Reset the earbuds.

**If the earbuds cannot be charged, please activate the warranty and contact us to send a new product.**



Please clean the charging contacts of the earbuds and charging case frequently to avoid charging failures.

4

**Safety Instructions**

1. Keep the product away from extremely hot and cold environments, it will damage the battery and circuit.
2. Avoid liquid immersion into the product.
3. Do not disassemble the product.
4. Do not use concentrated chemical products or detergents to clean the product.
5. Use only 5V/1A power supply. Connecting the power supply voltage too high may cause serious damage.
6. Do not randomly discard or place the product near fire or high temperature to avoid the danger of explosion.

5

**ATTENTION!**

Please be careful while listening to music. Blaupunkt has always ensured that every audio product is powerful and produces massive bass and other audio ranges. Please raise the volume levels slowly and do not play music at full volume levels as this could hurt your ears.

**1 Year Warranty**

If you have any issue with your product please contact our Authorized Customer Care team.

**Blaupunkt Authorized Service Center:**

Envent World Wide Pvt Ltd.  
Khasra. No- 15/15(4-16), Village Samalkha, Tehsil Vasant Vihar, New Delhi- 110037

**Email-** [wecare@blaupunktaudio.in](mailto:wecare@blaupunktaudio.in)

**Whatsapp Chat Support:** 8860 022 600

Please submit the following information while claiming product warranty:

-Serial Number

-Date of purchase

-A copy of proof of purchase in case of warranty

**Note-** If you do return the product, please use the original packaging or other suitable packaging to protect it in transit

6